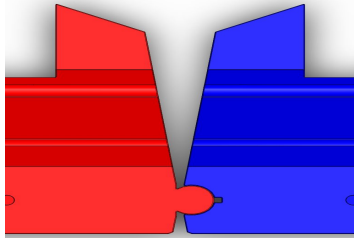




The Locking Line Barriers are a Rapid Deployment Billboard Barrier System with a unique geometric design made of steel reinforced polyethylene, for an anticipated **10 year lifespan**. Control flooding, traffic, pedestrians and/or Create contaminated fluid pools for environmental protection.

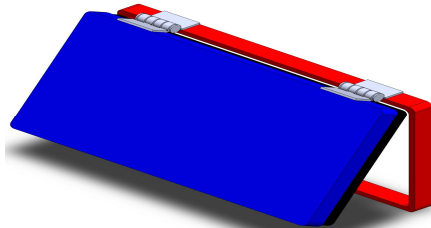
- Our state of the art vinyl magnet seals provide the water tight joints necessary to Protect Life and Property...

Magnetic Sealing Connection Joint:



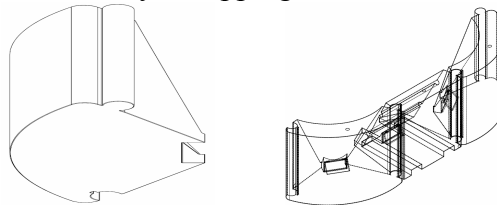
- as well as the mechanism necessary to allow flood waters to fill the barrier for ballast automatically and quick release.

Operational Sealing Ballast Door:

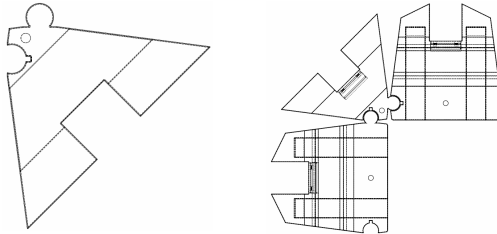


Each part accommodates a $\pm 15^\circ$ chamfer angle for minor linear adjustments. The four different operational parts along with the unique geometrical unit design comprise the Barrier System to provide the flexibility to meet most any Topographical Challenges.

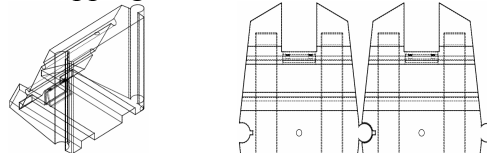
- **End Caps** – Provide an abutment seal at each end of a linear length assembly. Shipping: 4 ea 8'x8'x4'.



- **90° Left and Right turn units**
Shipping Size: 4' x4'4" x4' 4 pieces



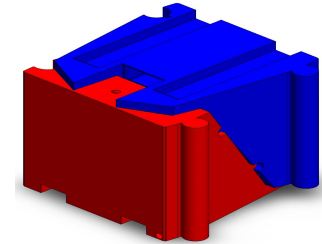
- **Main Wall Units**
Shipping Size: 2 ea. Combo 4' Cube



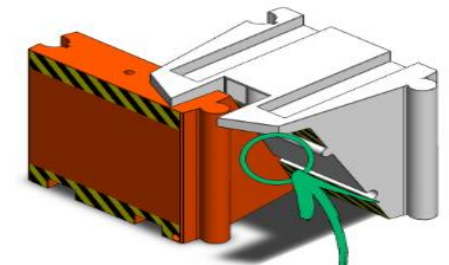
RAPID DEPLOYMENT

Designed to fit and fill a standard 53' truck trailer with 416' of linear barrier.

Step 1: Unload from Transport Vehicle;



Step 2: Slip and Slide the 2 Units Apart;



Step 3: Slide Together accordingly;

